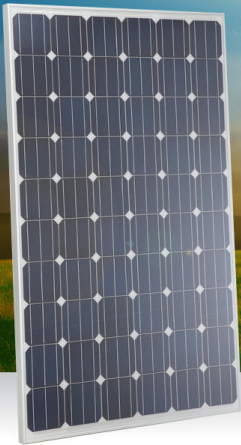


Introducing the most reliable monocrystalline PV module



SSM60C Series - 250/260 watts

100%
independently
re-tested

Unique quality: 100% re-test on EVERY module by a third-party testing company (STS Certified)

16%
module
efficiency

Up to 16% module efficiency and lower operating cell temperature: higher performance to maximize your electricity production for each m²

-0/+3%
positive
tolerance

Guaranteed power output: positive tolerance on each panel (-0/+3%)

25
year
warranty

10-year product warranty
Linear 25-year power output warranty

N°1 in quality

Launched in 2012, the STS Testing Campaign consists in testing randomly-selected solar panels on a mass-production scale, in order to provide a benchmarking of PV makers' real quality.

The results speak for themselves; Senersun outranks the competition.

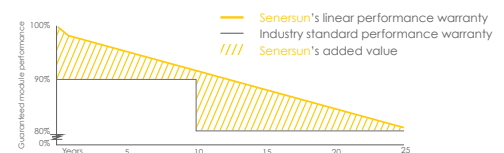
Safely packed

Because packaging is an essential part of the value chain, Senersun has specifically designed its packaging to ensure the protection of your panels until their destination.

Just another solution we brought up to guarantee our panels' limitless quality.

Linear power warranty

Senersun panels will produce up to 103% of their rated power output at delivery. During the first year, Senersun guarantees that the actual power cannot differ by more than 3% from the specified power. From the second year onwards, the power will not decrease by more than 0.7% of the rated power per year.



Visit www.senersun.com for more information.

 **senersun**

Specifications

Electrical characteristics

Model	SSM60C-250	SSM60C-255*	SSM60C-260*
Maximum Power (Pmax)	250Wp	255Wp	260Wp
Power Density (Wp/m ²)	153.7	156.7	159.5
Maximum Power Voltage (Vmp)	30.52V	30.62V	30.70V
Maximum Power Current (Imp)	8.19A	8.33A	8.47A
Open-Circuit Voltage (Voc)	37.54V	37.66V	37.76V
Short-Circuit Current (Isc)	8.84A	8.99A	9.14A
Cell Efficiency	17.9%	18.3%	18.7%
Module Efficiency	15.4%	15.7%	16%
No. of Diodes	6		
Maximum System Voltage	1000V		
Maximum Series Fuse Rating	15A		
Power Tolerance	-0/+3%		
Temperature Coefficients of Pmax	-0.43%/°C		
Temperature Coefficients of Voc	-0.3%/°C		
Temperature Coefficients of Isc	+0.04%/°C		
Nominal Operating Cell Temperature (NOCT)	45±2°C		

*TÜV, MCS and CEC certifications not available

Measured at STC Conditions: Irradiance: 1,000W/m² - AM 1.5 Spectrum - Temperature: 25°C
Electrical parameters may vary by ± 5%

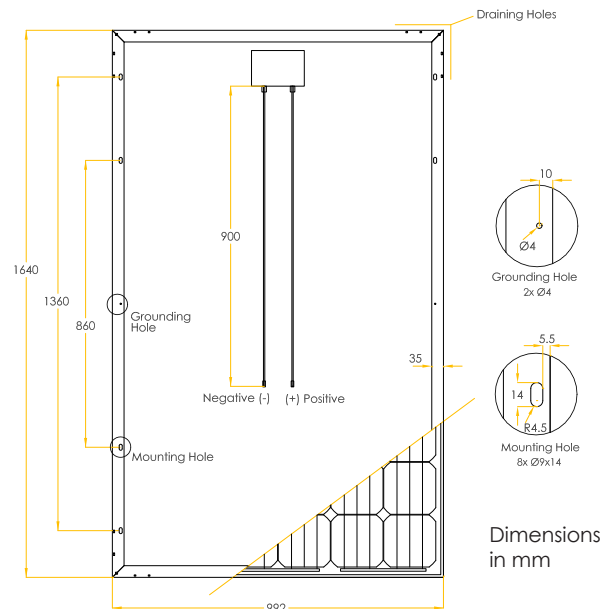
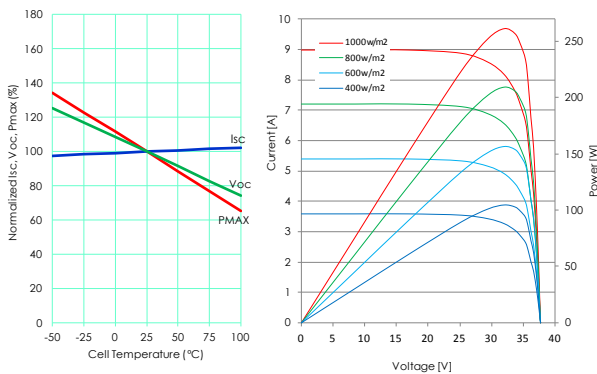
Mechanical characteristics

Cell Type	Mono-crystalline 156×156mm (6 inch)
No. of Cells	60 (6×10)
Dimensions	1640×992×50mm
Weight	21 kg (46.2 lbs)
Front Glass	3.2mm High Transmission, Low Iron, Tempered Glass
Frame	Anodized Aluminium Alloy
Junction Box	IP67 Rated
Output Cables	TÜV 4.0mm ² Single Core Length 900mm
Connectors	MC4 Compatible
Back Sheet	TPT

Packaging configuration

Pallet Load	20 pcs / pallet
Container Load	520 pcs / 40' HQ, 204 pcs / 20'

Temperature coefficients curves



SS-SPE-12E002:4.1

Senersun and the Senersun logo are registered trademarks of Senersun Limited.
© 2012 Senersun Limited. All rights reserved.
Specifications included in this datasheet are subject to change without notice.

CAUTION: READ SAFETY AND INSTALLATION INSTRUCTIONS
BEFORE USING THIS PRODUCT.

Visit www.senersun.com for more information.